



FacetCorp



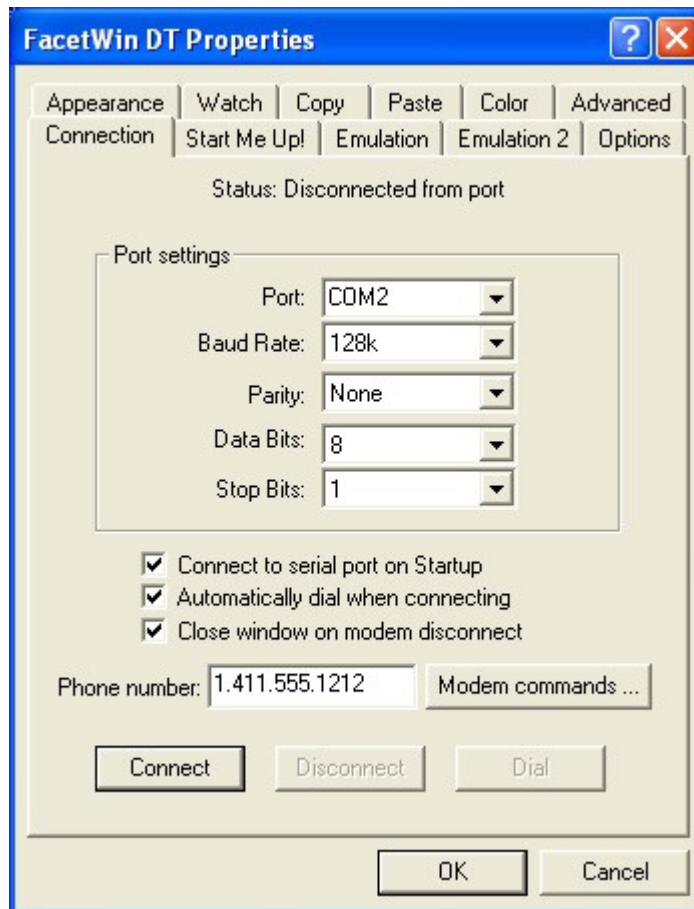
FacetWin DT (Dialup Terminal)

Serial Terminal Emulator

FacetWin DT is a serial only terminal emulator. It is based on the standard FacetWin network terminal emulator, and includes the world-class FacetWin terminal emulations. However, it is a low cost, client side only terminal emulator. It works either through a modem or a direct serial connection. You can associate each instance of FacetWin DT with a specific modem number and/or configuration. FacetWin DT is incredibly easy to setup and use!

FacetWin DT Features

- Economical serial only terminal emulator
- Terminal emulations include:
 - DEC VT series, through VT525
 - Wyse 60, 50
 - SCO ANSI Color Console
 - IBM 3151, 3164
- Host server applications become part of the user's Windows desktop, appearing as Windows desktop icons and/or items in the Windows Start menu.
- Supports modem or direct serial connections. (Note: Full FacetWin product required for network connectivity.)
- Includes full screen support so FacetWin can be the only application visible to the user.
- Powerful QuickLaunch™ feature uses the Windows "Property" sheet to set up a host server application with a Windows icon in just one minute!



- Allows the administrator to force the user to exit applications before exiting the emulator.
- Provides a native Windows interface for host server applications.
- Copy & paste between Windows and host server applications or between two host server applications.
- Window Watch™ automatically monitors host server applications for activity or specific output.
- MouseKeys lets the mouse input keystrokes.
- Easily upgradeable to full Facet **Win** network product.

Client Compatibility

Facet **Win** DT is fully compatible with Windows XP, 2003/2000, NT 4, Me, 98, & 95.

Note: Looking for the complete Facet **Win** product with *network-based* terminal emulation and connectivity? Check out [FacetWin](http://www.facetcorp.com).